

# Sinops Limited

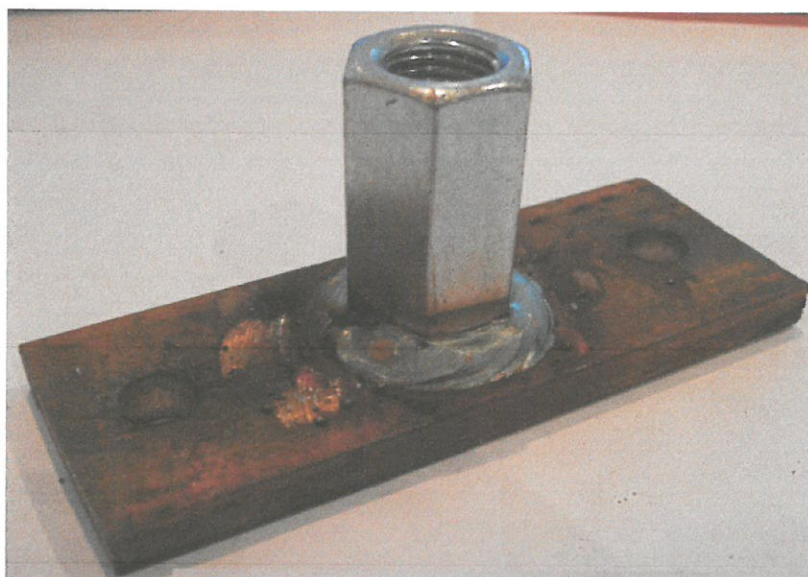
5-B, Redlake, Road, Pedmore, Stourbridge, West Midlands DY9 0RU



## DATA SHEET

### SCAFFOLD FLAT PLATE CONNECTOR for TIMBER

We confirm our Scaffold Flat Plate Connector for TIMBER is manufactured from Mild Steel.



## 120 x 45 x 10mm (M16)

This declaration of conformity is valid until there is significant change in the product and characteristics.

Signed By:

Name: **Richard Dunn**

Position: **Managing Director**

Date: **31 January 2017**

This declaration is the responsibility of the importer

Sinops Limited, 5-B, Redlake, Road, Pedmore, Stourbridge, West Midlands DY9 0RU