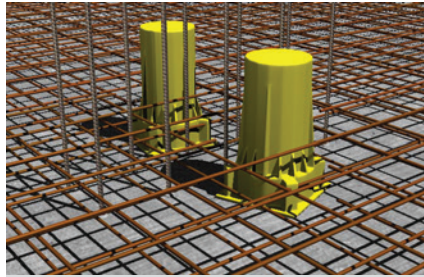
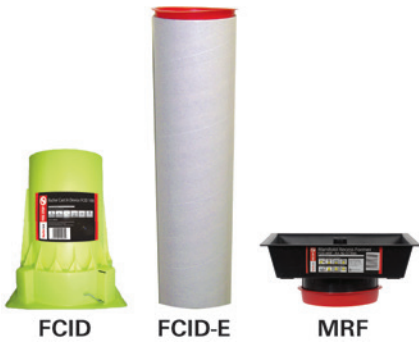
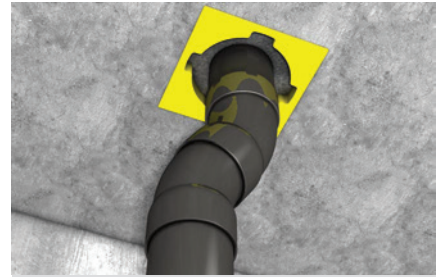


Fast and efficient solution for forming service penetrations through concrete floors

2
Products



Installation of FCID within reinforced concrete floor



Installed pipe through FCID device

BUILDING MATERIALS

- Reinforced cast concrete slabs
- Some prefabricated slab systems (subject to design)

ASSESSMENT/APPROVAL

| | |
|-------------------------|----------------------------|
| British Standard | Australien Standard |
| BS 476 - 20 | AS 1530: Part 4 |

ADVANTAGES

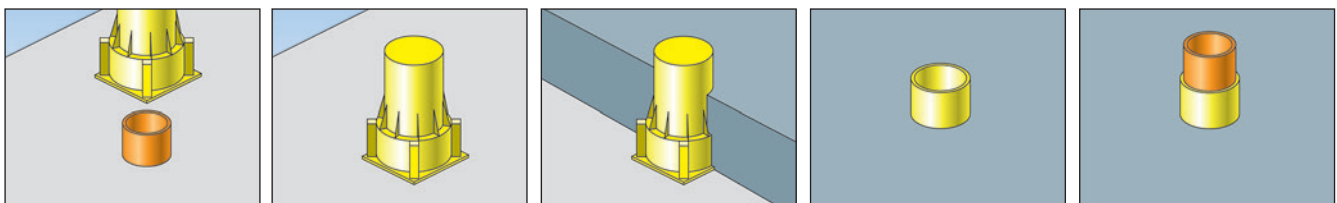
- Quick installation
- Watertight seal
- Higher tolerance
- Easily extendable
- Wider base for further connections
- No further collars or wraps required
- Reduce working at heights
- Cost saving
- Reduced foot plate
- Eco-friendly extension tube
- Closer proximity positioning

APPLICATIONS

- Sealing and firestopping PVC and HDPE pipes up to 6" (160 mm)
- Forms holes up to 10" (200 mm) thick concrete floors
- FCID and MRF creates recesses in slabs for lower positioning of soil
- Manifold units in wet room applications

FUNCTIONING

- FCID is a pass through system, which is constructed from a highly resilient polypropylene material and contains a powerful intumescent graphite band.
- The FCID is rugged enough to withstand the force and load of a concrete pour, yet lightweight enough to permit easy placement and handling.



INSTALLATION

- Position FCID as required and attach to formwork.
For concrete slab thickness greater than 250 mm:
 - Remove end cap from FCID.
 - Using FCID extension sleeve FCID - E Extension Tube, mark and cut using a fine tooth saw to required length.
 - Slide extension sleeve over FCID unit until it contacts side ribs.
 - Apply FCID - E/C Extension Cap to top of the extension sleeve.
 - Position FCID and extension assembly as required and attach to formwork.**For concrete slab thickness less than 250 mm:**
 - Cut FCID to required depth of concrete slabs.
 - Place cover cap FCID - CP Cap Plug on top of FCID.
 - Position FCID as required and attach to formwork.
- Pour concrete to required depth.
- On completion of concrete curing, remove all formwork and shuttering as necessary.
- Remove cap from top of FCID and place pipe through FCID as required.

SPECIFICATIONS

| Item | Art.-No. | Fits pipe-Ø | Hight x Shell diam. | Sales unit [pcs] |
|--|---------------|--------------------|--|------------------|
| FCID 65 Cast in Device | 509532 | Nom 3"/75 mm Pipe | 95 mm OD x 250 mm high - base = 154 mm x 154 mm | 1 |
| FCID 100 Cast in Device | 506324 | Nom 4"/110 mm Pipe | 140 mm OD x 250 mm high - base = 198 mm x 198 mm | 1 |
| FCID 150 Cast in Device | 509533 | Nom 6"/160 mm Pipe | 194 mm OD x 250 mm high - base = 253 mm x 253 mm | 1 |
| FCID 65-E/1000 Extension Tube | 509791 | FCID 65 CI | 95 mm ID x 101 mm OD x 1000 mm long | 1 |
| FCID 100-E/1000 Extension Tube | 509792 | FCID 100 CI | 140 mm ID x 147 mm OD x 1000 mm long | 1 |
| FCID 150-E/1000 Extension Tube | 509793 | FCID 150 CI | 194 mm ID x 201 mm OD x 1000 mm long | 1 |
| FCID 65-C Extension Cap | 511450 | FCID 65-E/1,000 | 93.5 mm - 96.5 mm tapered OD x 19 mm high | 1 |
| FCID 100-C Extension Cap | 509794 | FCID 100-E/1,000 | 139 mm - 142.5 mm tapered OD x 25.4 mm high | 1 |
| FCID 150-C Extension Cap | 511451 | FCID 150-E/1,000 | 194.5 mm - 199 mm tapered OD x 25.4 mm high | 1 |
| FCID-MRF Manifold Recess Former | 517846 | FCID 100 CI | 250 mm - 220 mm x 250 mm - 220 mm x 60 mm tapered recess | 1 |
| FCID 65-CP Cap Plug | 510878 | FCID 65 CI | 88 mm - 91.5 mm tapered OD x 19.5 mm high 131.5 mm - 136 mm tapered OD x 25.4 mm high | 1 |
| FCID 100-CP Cap Plug | 510879 | FCID 100 CI | 131.5 mm - 136 mm tapered OD x 25.4 mm high | 1 |
| FCID 150-CP Cap Plug | 510880 | FCID 150 CI | 186 mm - 194 mm tapered OD x 25.4 mm high | 1 |

Note: Details on 4 hours fire rated wraps are available on request.

TECHNICAL DATA

| | |
|--|---|
| State | Solid |
| Colour | Fluorescent yellow |
| Odour | Odourless |
| Shell material | Polyethylene |
| Fire rating | 4 hours - BS 476: Part 20 and AS 1530: Part 4 |
| Suitable for pipe diameter | Max up to 150 mm |
| Standard height | 250 mm |
| Extension or reduction in height possible | Yes |
| Standard flange width | Min. 154 mm and max 254 mm |
| Significant expansion occur at temperature | > 160 °C |
| Storage temperature | N/a |
| Shelf life | N/a |